

CARING FOR NEWLY-PLANTED TREES



Cheyenne is a hard place to grow Trees!



- Do trees grow naturally in Cheyenne?
- What are our challenges?
- Precipitation, hardiness zone, ph, clay soils, salt content, compaction, storms, I&D, people

It's easy to kill trees in Wyoming!



Buy Quality Trees

- Hardy species
- Insect or disease problems?
- Healthy, vigorous
- Good Form
- Adequate root ball: 1.5" = 20"
- Root condition?



Don't Plant Ash!

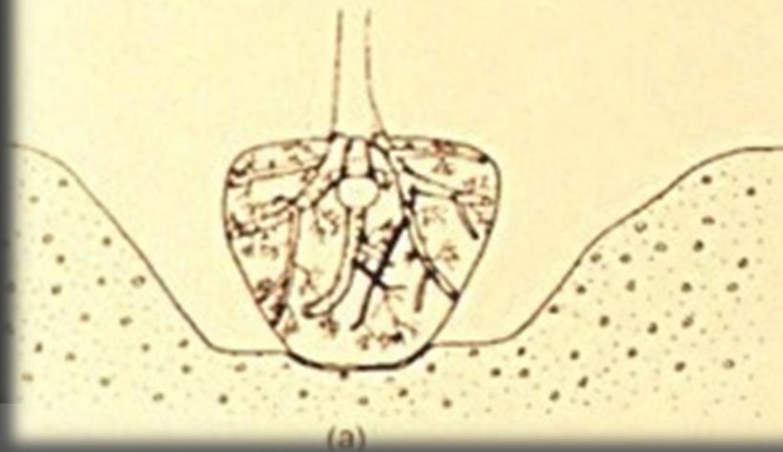


Plant the Tree Properly

- Find the root flare
- Cut circling roots
- Plant at the proper depth: 1-2 inches above ground level

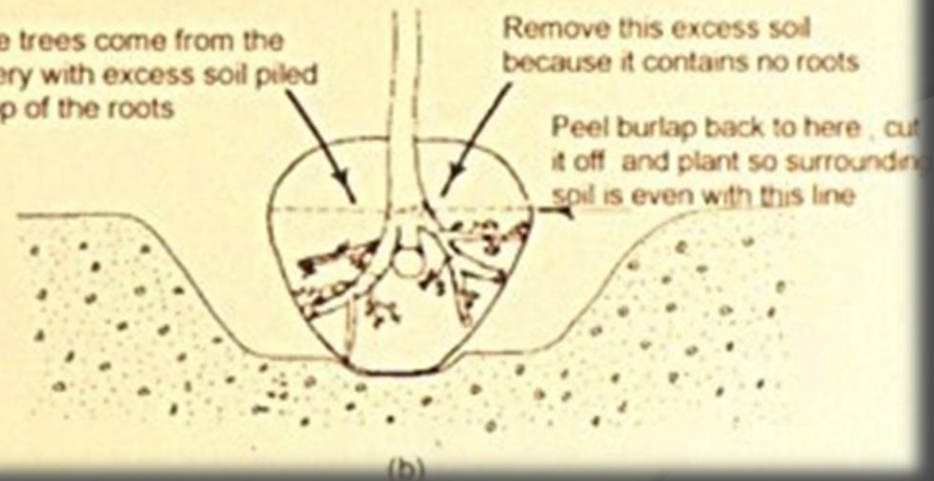


Good-quality root ball



Poor-quality root ball

Some trees come from the nursery with excess soil piled on top of the roots





Proper Planting Hole

Wider Is Better!



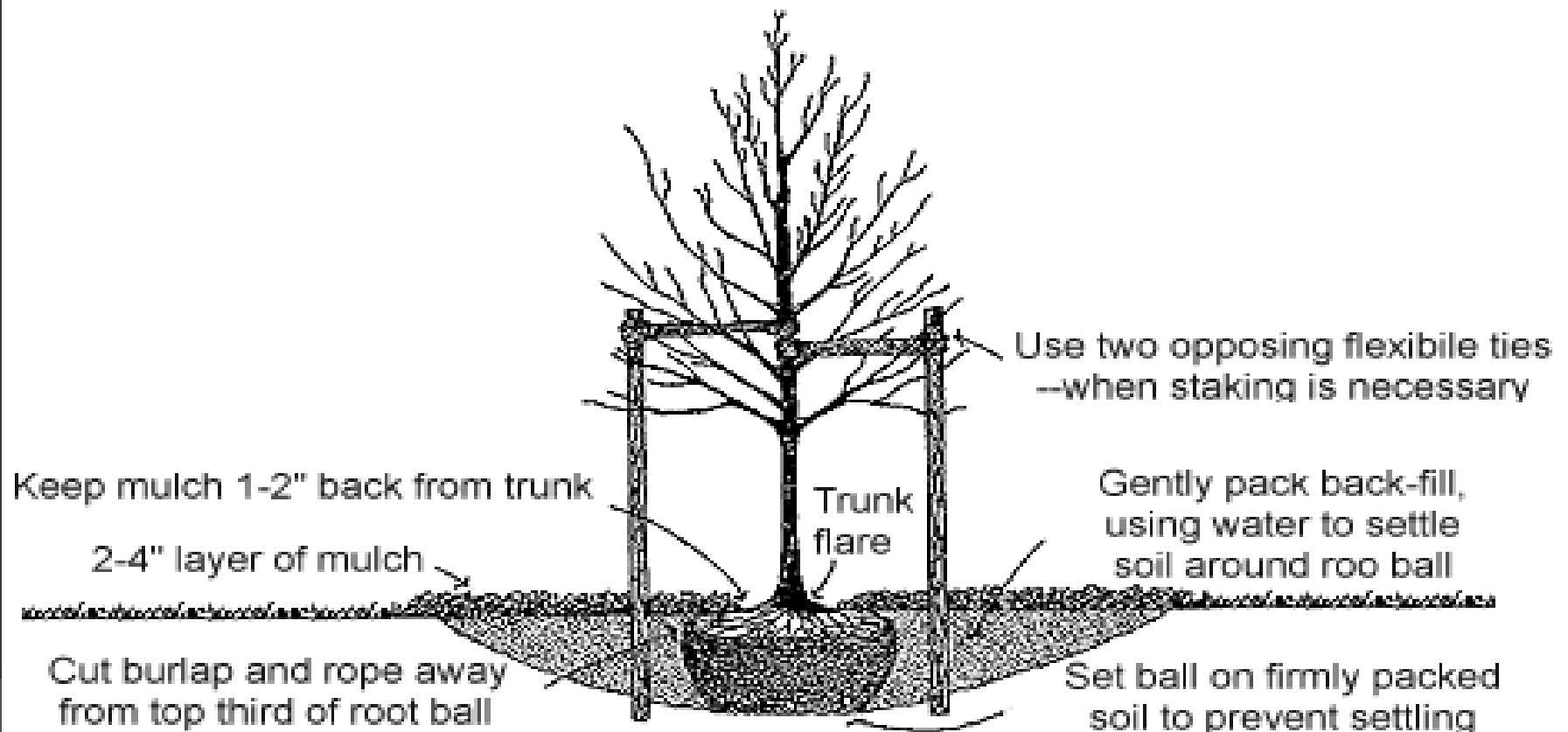
← **Good Hole**



Bad Hole →

Tree Planting

- Dig a wide hole
- Remove all packing material
- Find root flare/treat circling roots
- Don't amend the soil
- Water when backfilling
- Consider a basin
- Mulch, stake and protect as necessary



Mulching

- Mulch newly planted trees with wood chips, bark or rock
- Mulch as large an area as possible.

Benefits

- Prevents competition with grass and weeds
- Retains soil moisture- about 30% more
- Wood mulch improves soil nutrient levels
- Improves soil aeration
- Protects from lawnmower and string trimmer damage
- Reduces soil temperature extremes





Mowers/trimmers Kill Trees!



Grass/Sod is a fierce competitor!

HOW A TREE GROWS



- Most tree roots are in the first 12 inches of the soil profile
- Rarely are they deeper than 18 inches
- They occupy the same area as turf grass roots
- Turf grass forms a very dense layer of roots and emits allelopathic chemicals

Trees do better in mulch!





Mulch

Young Trees

- Helps them establish much quicker
- Will grow faster
- Be more resistant to I&D
- Less likely to experience dieback
- Less likely to die and need replacement
- Mulch is a good investment!



Mulching

Maintenance

- Weeds and grass will seed into mulch
- Use Roundup twice a season- be careful!
- Wood mulch becomes soil- replace as needed
- Where wind is a problem use coarse mulch/rock





Rock works well too!





Staking/Protecting

- It's windy in Cheyenne!
- 2-3 stakes is adequate
- Don't drive stakes into root ball
- Don't over tighten guy wires
- Use mesh straps or other non-abrasive material
- Remove after 1-2 years
- Bamboo not necessary
- Trunk protectors/trunk wrap?





Watering

- Lack of adequate water is primary cause of tree mortality
- Turf irrigation systems can't sustain newly planted trees
- Supplemental watering is critical to survival
- Drip system, hand water, tree gators
- Should water once/week: 10 gals per 1in. of caliper
- Adjust turf irrigation- less frequency/more volume





Winter Watering is Critical!



- Water once per month Dec-Mar
- When above freezing
- Ground not frozen
- Evergreens more prone to desiccation

Caring for Newly-planted Trees

Summary:

- Quality nursery stock
- Proper planting
- Improve conditions for the roots
- Reducing competition with turf
- Protecting the tree
- Supplemental watering, adjust amount/frequency

